

GABA for Microdialysis

< HPLC Conditions >

HPLC-ECD system	HTEC-510 or 700 Series + ELS-500
Separation Column	SA-5ODS (3.0 mm,i.d. x 150 mm)
Precolumn for mobile phase	AC-ODS packing material in ID 4.0 x 5.0 mm
Mobile Phase A	50 mM phosphate buffer(pH 2.8) – Methanol (52 : 48, v/v) 5 mg/L EDTA · 2Na
Mobile Phase B	50 mM phosphate buffer(pH 2.8) – Methanol (10 : 90, v/v) 5 mg/L EDTA · 2Na
Flow rate	500 µL/min
Column Temp.	30 °C
Working Electrode	WE-GC (Glassy Carbon) or WE-PG (Pure Graphite)
Gasket	GS-25
Applied potential	+600 mV vs. Ag/AgCl
Time Constant	3.0sec
Column wash	During 16 to 18 min

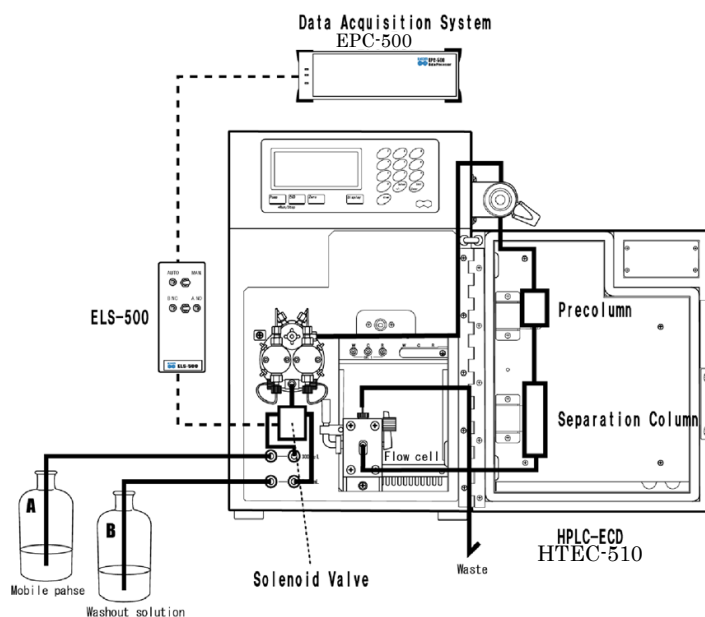
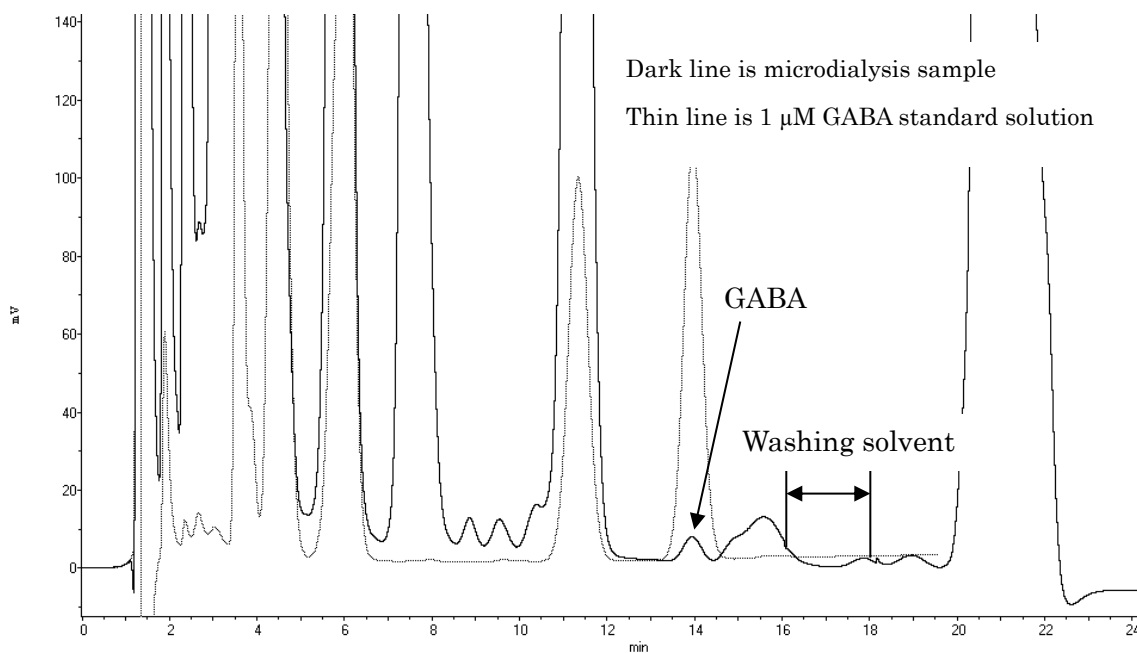


Fig. 1 Flow diagram of HPLC system. Low pressure switching valve can be used only with low dead volume systems such as Eicom's EP-700 or HTEC-510 that has pulse quenching technology. Otherwise, two different types of mobile phase will be mixed in a pulse damper.



Note

Please be careful to separate from foreign substances behind.

Mobile Phase A 1 L

50 mM phosphate buffer (pH 2.8)	Methanol	EDTA · 2Na
520 mL	480 mL	5 mg

Mobile Phase B 200 mL

50 mM phosphate buffer (pH 2.8)	Methanol	EDTA · 2Na
20 mL	180 mL	1 mg

50 mM phosphate buffer (pH 2.8) 1 L

NaH ₂ PO ₄ ·2H ₂ O	phosphoric acid	H ₂ O
7.8 g	7 mL	1000 mL

Eicom Corporation HQ

113 Kita Enmenden-cho Shimotoba, Fushimi-ku Kyoto, Japan 612-8497

<https://www.eicom.co.jp/>