

Catecholamine (NA, AD, DA) for Blood

< HPLC Conditions >

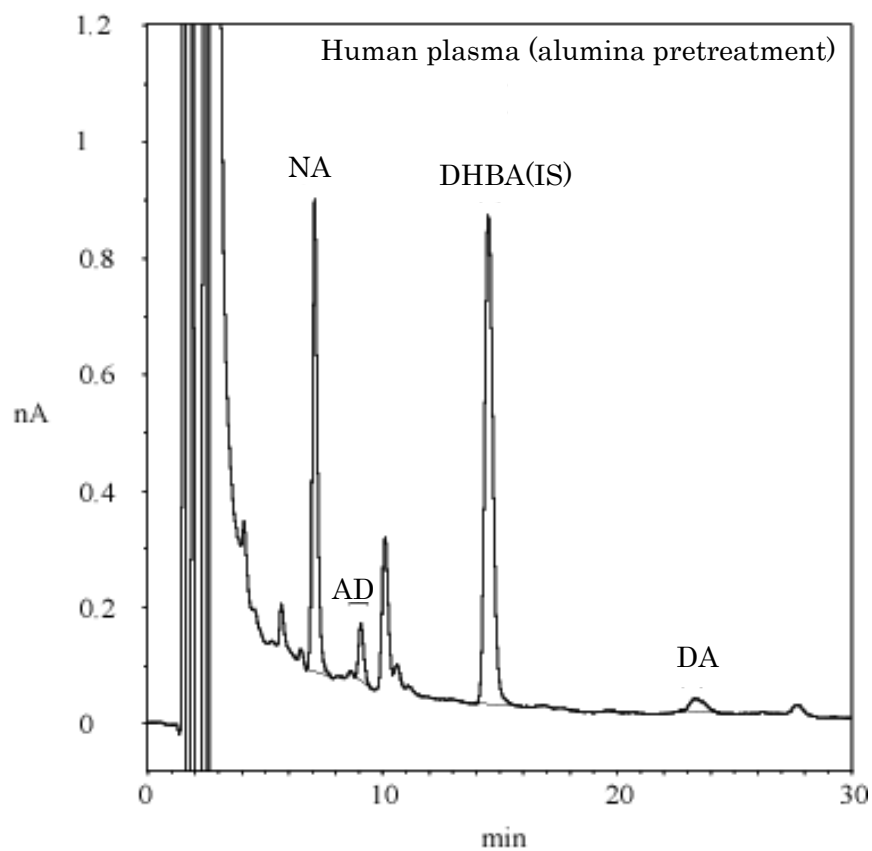
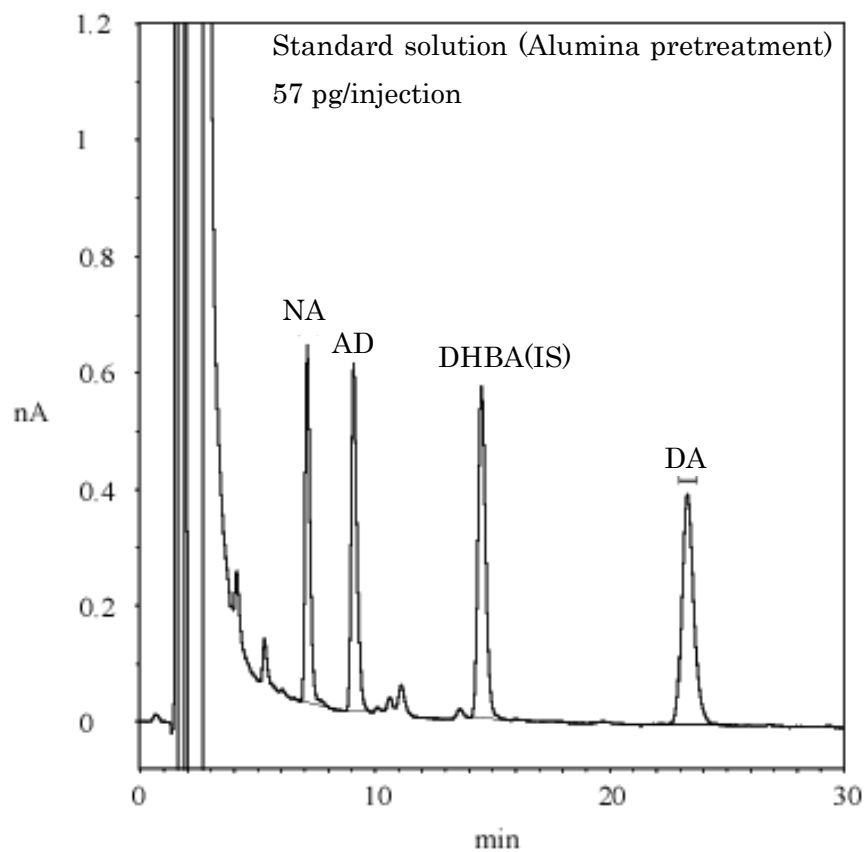
HPLC-ECD system	HTEC-510
Separation Column	Eicompak CA-5ODS (φ2.1 × 150 mm)
Precolumn for sample	PC-03-CA (φ3.0 × 4.0 mm)
Precolumn for mobile phase	PC-04-CA (φ4.0 × 5.0 mm)
Mobile Phase	100 mM phosphate buffer (pH 5.7) – Methanol (88 : 12, v/v) 700 mg/L sodium octane sulfonate (SOS) and 50 mg/L EDTA-2Na
Flow rate	230 μL/min
Column Temp.	25 °C
Working Electrode	WE-3G (Graphite)
Gasket	GS-25
Applied potential	+450 mV vs. Ag/AgCl
Time Constant	3.0 sec

Mobile Phase 1000 mL

100 mM phosphate buffer (pH 5.7)	Methanol	Sodium Octane Sulfonate (SOS)	EDTA · 2Na
880 mL	120 mL	700 mg	50 mg

100 mM phosphate buffer (pH 5.7) 1000 mL

NaH ₂ PO ₄ ·2H ₂ O	Na ₂ HPO ₄ ·12H ₂ O	H ₂ O
14.38 g	2.81 g	1000 mL



Eicom Corporation HQ

113 Kita Enmenden-cho Shimotoba, Fushimi-ku Kyoto, Japan 612-8497

<https://www.eicom-usa.com>