

L-DOPA for Microdialysis

< HPLC Conditions >

HPLC-ECD system	HTEC-510
Separation Column	Eicompak SC-5ODS (φ2.1 × 150 mm)
Precolumn for mobile phase	PC-04-AC (φ4.0 × 5.0 mm)
Mobile Phase	100 mM citrate-acetate buffer (pH 2.4) – Methanol (85 : 15, v/v) 110 mg/L sodium octane sulfonate (SOS) and 5 mg/L EDTA-2Na
Flow rate	230 μL/min
Column Temp.	25 °C
Working Electrode	WE-3G (Graphite)
Gasket	GS-25
Applied potential	+750 mV vs. Ag/AgCl
Time Constant	3.0 sec

Mobile Phase 1000 mL

citric acid monohydrate	sodium acetate	H ₂ O
15.718 g	0.837 g	850 mL

Methanol	Sodium Octane Sulfonate (SOS)	EDTA · 2Na
150 mL	110 mg	5 mg

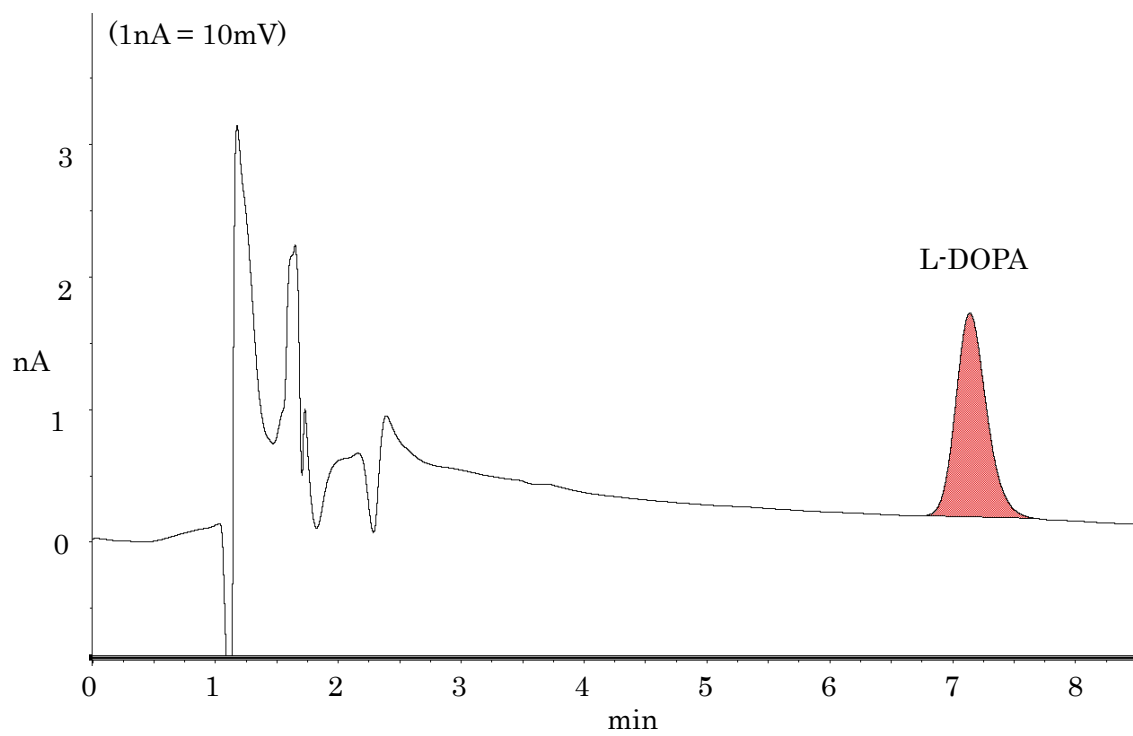


Fig. 1 Standard (100pg/inj.) Chromatogram.

Eicom Corporation HQ

113 Kita Enmenden-cho Shimotoba, Fushimi-ku Kyoto, Japan 612-8497

<https://www.eicom.co.jp/>