

# Monoamines and Metabolites for Microdialysis

## < HPLC Conditions >

HPLC-ECD system	HTEC-510
Separation Column	Eicompak SC-5ODS (φ2.1 × 150 mm)
Precolumn for mobile phase	PC-04-AC (φ4.0 × 5.0 mm)
Mobile Phase	100 mM citrate-acetate buffer (pH 3.9) – Methanol (83 : 17, v/v) 140 mg/L sodium octane sulfonate (SOS) and 5 mg/L EDTA-2Na
Flow rate	230 μL/min
Column Temp.	25 °C
Working Electrode	WE-3G (Graphite)
Gasket	GS-25
Applied potential	+700 mV(+600 ~ +750 mV) vs. Ag/AgCl
Time Constant	3.0 sec

Mobile Phase 1000 mL

100 mM citrate-acetate buffer (pH 3.9)	Methanol	Sodium Octane Sulfonate (SOS)	EDTA · 2Na
830 mL	170 mL	140 mg	5 mg

100 mM citrate-acetate buffer (pH 3.9) **1,700 mL**

citric acid monohydrate	sodium acetate	H <sub>2</sub> O
14.71 g	8.20 g	1,700 mL

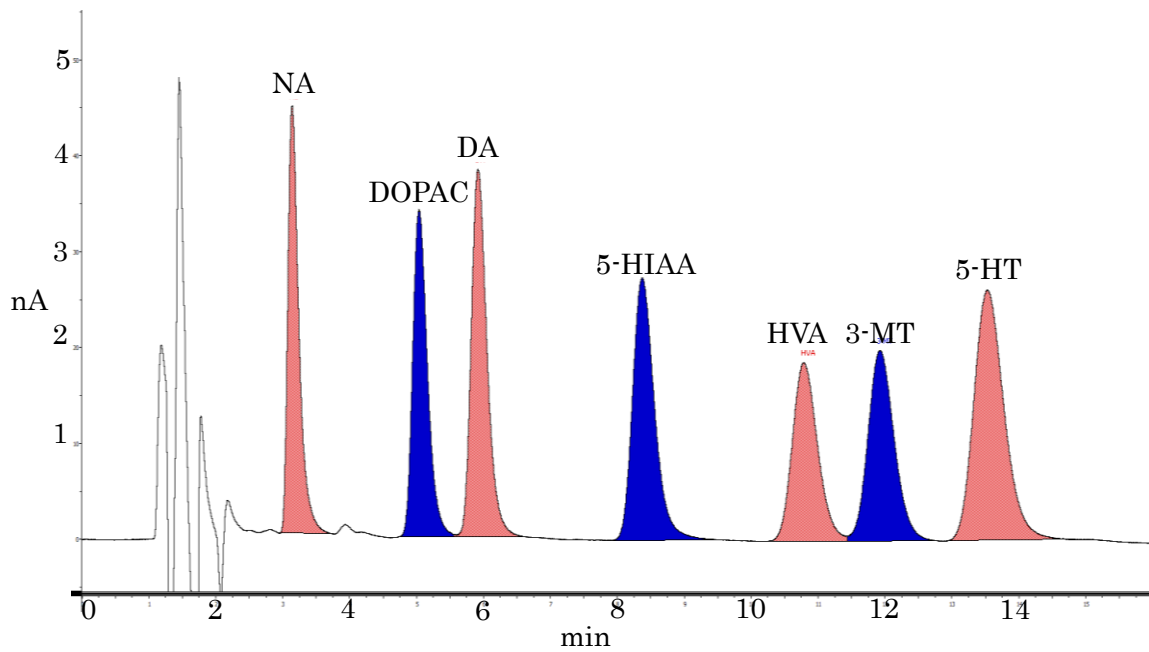


Fig. 1 Standard (100pg/inj.) Chromatogram.

Eicom Corporation HQ

113 Kita Enmenden-cho Shimotoba, Fushimi-ku Kyoto, Japan 612-8497

<https://www.eicom.co.jp/>