

# DA & 5HT for Tissue, Blood and Other Samples

## < HPLC Conditions >

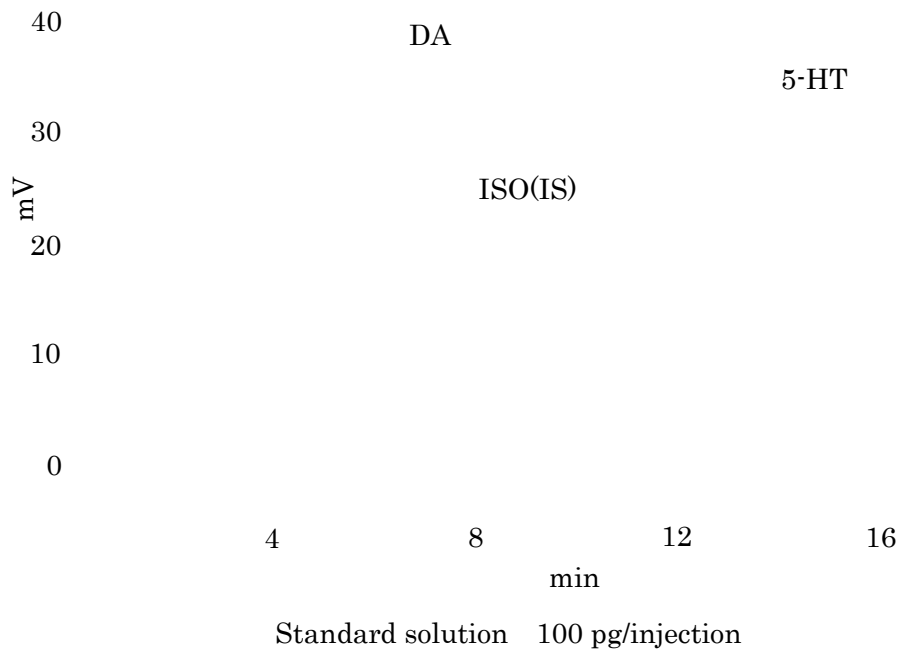
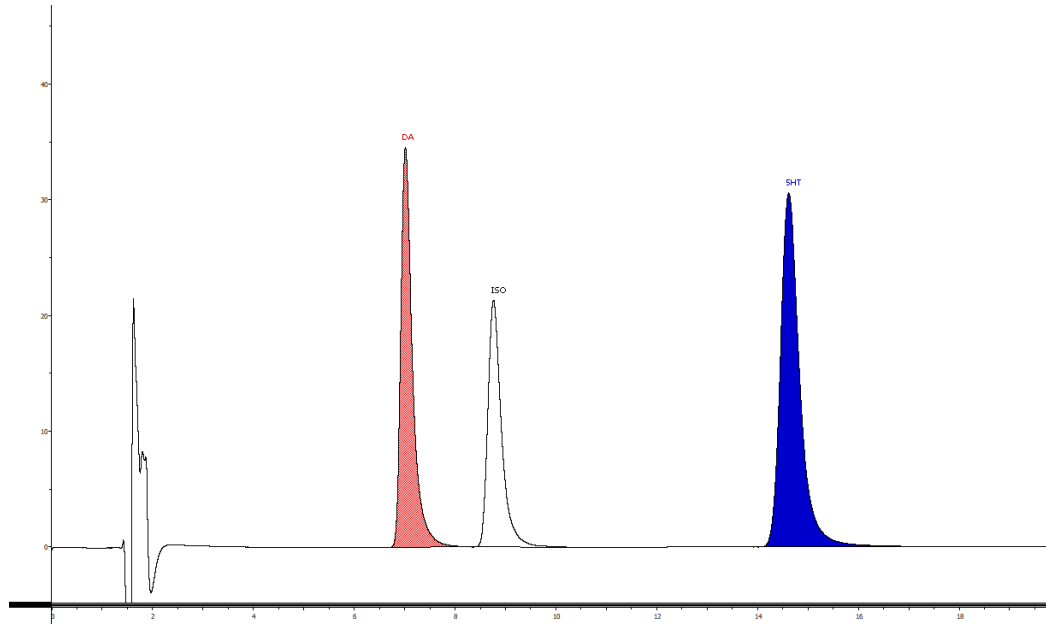
HPLC-ECD system	HTEC-510
Separation Column	Eicompak CA-5ODS (φ2.1 × 150 mm)
Precolumn for sample	PC-03-CA (φ3.0 × 4.0 mm)
Precolumn for mobile phase	PC-04-CA (φ4.0 × 5.0 mm)
Mobile Phase	100 mM phosphate buffer (pH 6.0) – Methanol (80 : 20, v/v) 500 mg/L sodium octane sulfonate (SOS) and 50 mg/L EDTA-2Na
Flow rate	230 μL/min
Column Temp.	25 °C
Working Electrode	WE-3G (Graphite)
Gasket	GS-25
Applied potential	+450 mV vs. Ag/AgCl
Time Constant	3.0 sec

### Mobile Phase 1000 mL

100 mM phosphate buffer (pH 6.0)	Methanol	sodium octane sulfonate (SOS)	EDTA · 2Na
800 mL	200 mL	500 mg	50 mg

### 100 mM phosphate buffer (pH 6.0) 1000 mL

NaH <sub>2</sub> PO <sub>4</sub> ·2H <sub>2</sub> O	Na <sub>2</sub> HPO <sub>4</sub> ·12H <sub>2</sub> O	H <sub>2</sub> O
13.45 g	4.94 g	1000 mL



**Eicom Corporation HQ**

113 Kita Enmenden-cho Shimotoba, Fushimi-ku Kyoto, Japan 612-8497

<https://www.eicom-usa.com>