

## Amino Acids for Tissue, Blood and Other Samples

### < HPLC Conditions >

HPLC-ECD system	HTEC-510 (M-510)
Separation Column	Eicompak SA-5ODS ( $\phi 3.0 \times 150$ mm)
Precolumn for sample	PC-03-CA ( $\phi 3.0 \times 4.0$ mm)
Precolumn for Mobile Phase	PC-04-CA ( $\phi 4.0 \times 5.0$ mm)
Mobile Phase A	100 mM phosphate buffer (pH 6.0) – Methanol (73 : 27, v/v) 5 mg/L EDTA-2Na
Mobile Phase B	100 mM phosphate buffer (pH 6.0) – Methanol (30 : 70, v/v) 5 mg/L EDTA-2Na
Flow rate	500 $\mu$ L/min
Column Temp.	30 °C
Working Electrode	WE-GC (Glassy carbon) or WE-PG(Pure graphite)
Gasket	GS-25
Applied potential	+600 mV vs. Ag/AgCl
Time Constant	3.0 sec

#### Mobile Phase A 1000 mL

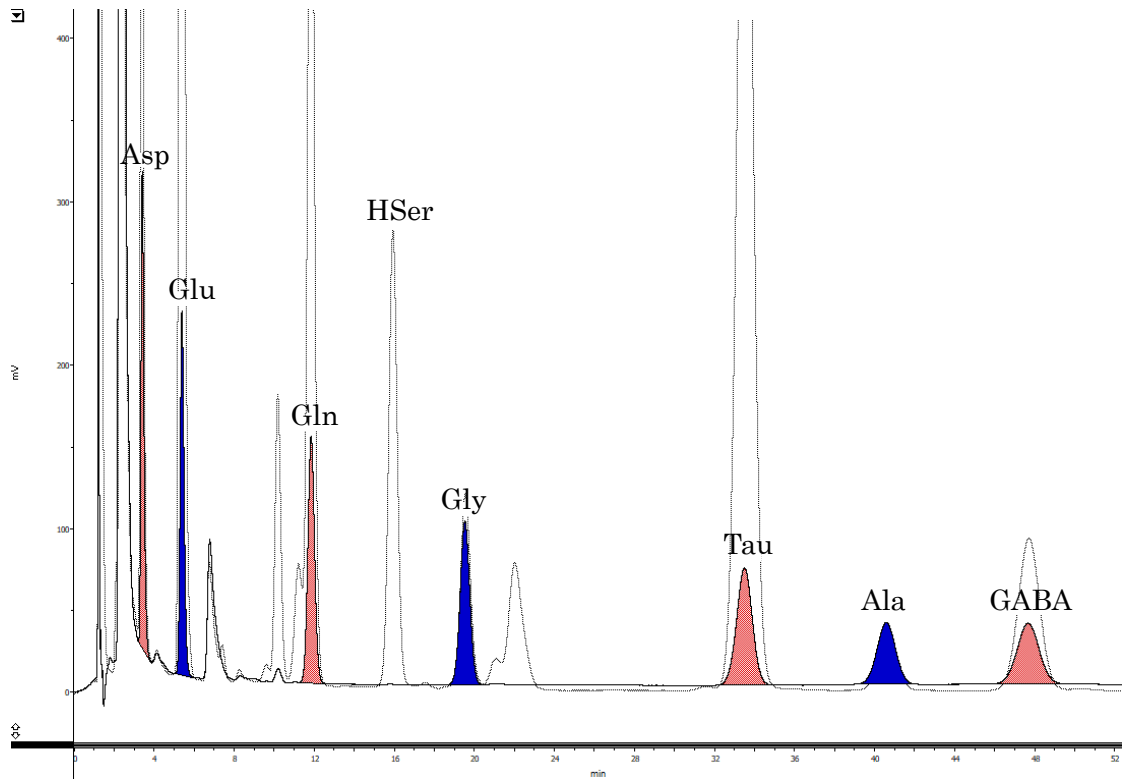
100 mM phosphate buffer (pH 6.0)	Methanol	EDTA · 2Na
730 mL	270 mL	5 mg

#### Mobile Phase B 1000 mL

100 mM phosphate buffer (pH 6.0)	Methanol	EDTA · 2Na
300 mL	700 mL	5 mg

#### 100 mM phosphate buffer (pH 6.0) 1000 mL

NaH <sub>2</sub> PO <sub>4</sub> ·2H <sub>2</sub> O	Na <sub>2</sub> HPO <sub>4</sub> ·12H <sub>2</sub> O	H <sub>2</sub> O
13.45 g	4.94 g	1000 mL



Eicom Corporation HQ

113 Kita Enmenden-cho Shimotoba, Fushimi-ku Kyoto, Japan 612-8497

<https://www.eicom-usa.com>